

Tyre Structure

Carbon black compound with kerfs

Improves snow/wet traction and braking.

Jointless full cover reinforced belt

Ideal tread strength.

Wide steel belt layer

Ensures optimal tread stiffness and improves handling performance.

Equilibrium polyester carcass line

Enhanced sidewall stiffness and durability.

Folded belt edge tape

Endurance of the belt has been enhanced.



Adoption of slim bead filler

Improves endurance of carcass and bead.

High strength bead wire

Improves uniformity and durability of the bead position.

Size and Specifications

M. Code	Size	Load	Speed	Fuel	Wet	Noise (dB)	Exterior Noise
2021187	195/75R16	107/105	R	E	C	73	W2
2020978	195/70R15	104/102	R	E	C	73	W2
2021186	195/65R16	104/102	T	E	C	73	W2
2021185	195/60R16	99/97	H	E	C	73	W2
2021189	205/75R16	110/108	R	E	C	73	W2
2021188	205/65R16	107/105	T	E	C	73	W2
2021192	215/75R16	113/111	R	E	C	73	W2
2021190	215/65R16	106/104	T	E	C	73	W2
2021191	215/65R16	109/107	T	E	C	73	W2
2021195	225/75R16	121/120	R	E	C	73	W2
2021183	225/70R15	112/110	S	E	C	73	W2
2021194	225/65R16	112/110	R	E	C	73	W2
2021196	235/65R16	115/113	R	E	C	73	W2

Hankook Tyre UK Ltd.

Fawsley Drive, Heartlands Business Park, Daventry, Northamptonshire, NN11 8UG. T 01327 304 100 F 01327 304 110

www.hankooktire.com/uk

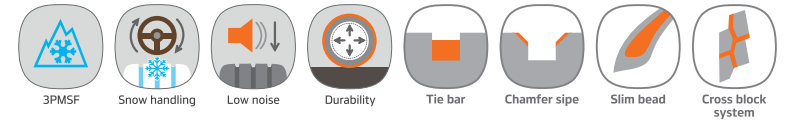
190910_RA30



vanTRA
ST AS2

Multi-performance van tyre for reliable driving in all weather conditions





Benefits and Technology

Handling

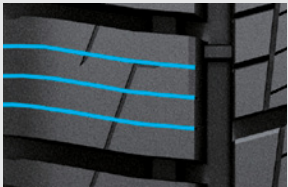
A Long Sipe Length

Long sipe length enhances snow performance.



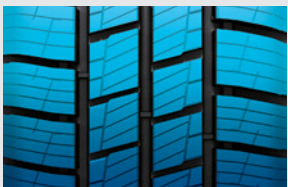
B Optimised Sipe

Optimal sipe length application for improved grip on the road through all weather conditions.



C Optimised Pitch

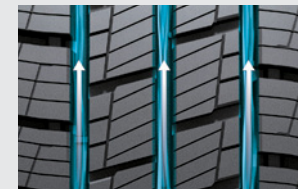
Optimal pitch arrangement to increase handling in the snow and ice.



RR / Wet / PBN

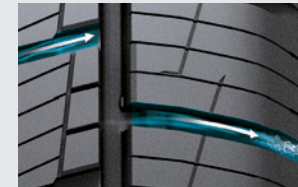
D 3 Wide Aqua Channels

Improved wet performance by applying straight grooves.



E Open Shoulder Groove

Open shoulders help water evacuation and wet performance.



F Chamfer Sipe

The contact area is widened, instantaneously improving handling performance.

